

PowerToto

Your prime
MacOS complete
solution for bets
and lottery games

Main Features

Creation modes

You may create systems based on repetitions for games such as Totocalcio and Totosei, from one column to 13 triplets. You may even create systems based on combinations, such as Totogol, SuperEnalotto, and Lotto with ennuples from one to 90 numbers. The biggest strength of PowerToto is its speed: it can generate and constraint systems in real time and it is even able to reduce systems in few seconds with PowerMacintosh computers.

Constraint methods

Every system can be constrained with several filters. Some of the more used filters are signs, consecutivity, parallels, simmetries, interruptions, odd and even groups, sequences, constrained columns and groups, derived formulas.

The constraint methods can be inputed and parameterized through finest detail or easy input scheme. Furtherly other methods are based on stocastic hypotheses with pickets and you can even recover an unlimited number of failed constraints.

System reductions

You can reduce the whole full system or the constrained one in order to get victory of second or third class. Different processes have been adapted to the games to let you save as many combinations as possible or to let you preserve a sustained number of them in the final system.

Import and export

Any column or combination can be printed to the game form of any game: you may tune any print with fine precision. You may even print a system summary, and the columns in extended or grouped manner.

Any system can be exported to plain text documents.

Boolean operations

You can build systems by boolean operations: you are allowed to union, intersect, subtract, invert, and make domain from systems.

Different views of systems

Game systems aren't shown as in our shareware applications, through the view with combinations or column each side by side. You may even look at systems through four views:

- combinations view
- system summary
- constraint icons
- grouped view

These alternative views let you feel more comfortable at working and modifying the systems.

New games: Totosei and Lotto

Too much people have been asking us why we didn't developed in the last year anything about Totosei and Lotto. We answered them with facts: PowerToto lets you build Totosei systems as easily as you may with Totocalcio systems.

The same rule for Lotto: it is as easy as SuperEnalotto, because you may exactly use the same constraints and more. You may even specify which kind of ennupe you will bet, doubles, triplets and so on.

Groupings of columns

In Totocalcio and Totosei games, you may group columns of constrained systems, on screen and print them too.

This feature lets you reduce considerably the total amount of forms you are printing on, if the system is based on the games about soccer matches.

New constraints

We added new constraints to the vast number of constraints available in your shareware applications. We even added the mathematical picket in Totocalcio, also available for Totosei and a lot of

constraints for SuperEnalotto:

- figures
- counterfigures
- radicals
- reversibles
- digits
- simmetrical triplets

The new constraints listed above are available also for Lotto game.

Expanded versatility of dialogs

It has been boring to specify the same parameters several times on different sets in constraints. Suppose the tens constraint in SuperEnalotto: anybody would insert that wants to accept combinations that haven't more than two numbers per ten. If you set yourself as amateur, you can make easily with just few clicks, because the tens dialog is customized to user needs.

Drag and drop

You may drag constraint icons between system documents. Any constraint depicted by an icon contains some parameters that can be copied into systems through the drag and drop.

Any constraint is available in the Constraints palette and you can drop them conveniently to the proper system.

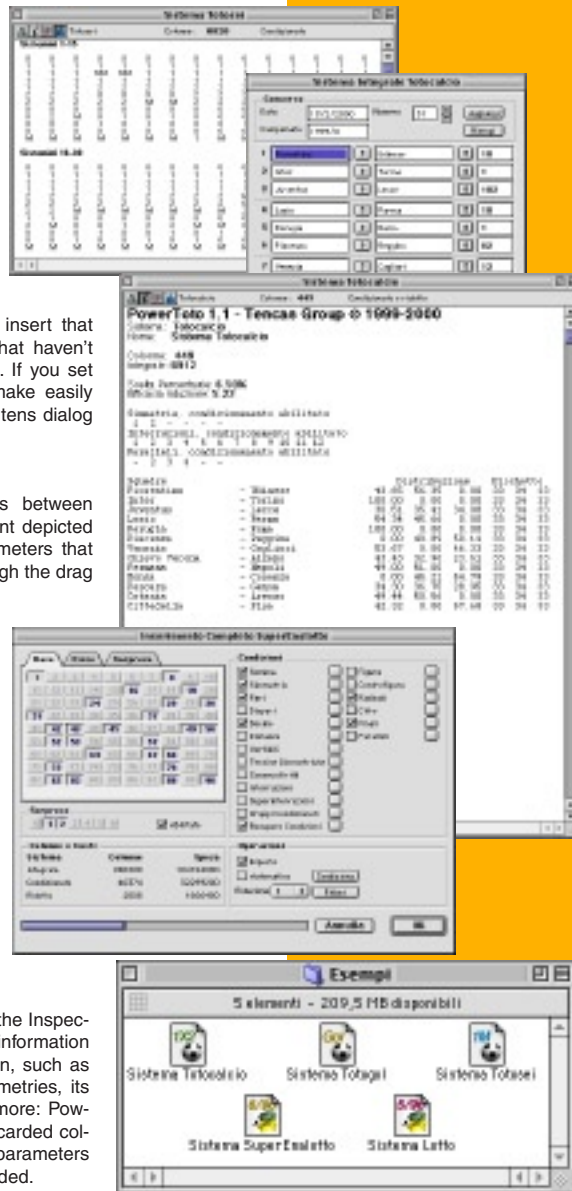
Lotto's Archive

PowerToto is installed with the complete archive of Italian Lotto's draws since 1871. You may have access any draw and get some statistic information such as the drawing frequency of some numbers, the last late-comer numbers, and the historical late-comer numbers.

Inspector

We even added a useful utility, the Inspector palette: it lets you check any information about any column or combination, such as the number of its signs, its simmetries, its parallels and so on. And even more: PowerToto, if you set it to display discarded columns, lets you know the violated parameters that conducted them to be discarded.

Concept and Design
by Marco Tenuti



Minimal Requirements

- MacOS 7.5
- 68030 processor
- 16 MB of RAM
- screen resolution at 640x480 with 256 colors
- CD-ROM drive

Suggested Requirements

- MacOS 8.0 or later
- PowerPC processor
- 32 MB of RAM
- screen resolution at 800x600
- Internet access



Tencas

www.tencas.com